

# Expansion Thermometers Safety Temperature Limiter Model SB15

## Applications

- Temperature monitoring for water, oil and gas
- Compressors
- Steam generators
- Temperature control and limiting devices for heat generating systems

## Special Features

- High switching safety
- Temperature control and indication in one gauge
- Disconnection in case of capillary-break



Safety Temperature Limiter SB15

## Description

In case of deficiencies, the safety temperature limiter Model SB15 puts the system into a safe working order. The shifting disc, which is arranged on the pointer shaft, actuates the switching operation at the micro switch when reaching the non-adjustable switch point or in case of capillary break and locks the current status. A reset is possible with a tool only after a temperature decrease by approx. 3 % of the scale range, if there is no capillary-break.

## Standard version

### Nominal size in mm

60, 72 x 72

### Accuracy class

Class 2 per DIN EN 13190

### Scale range

0 ... 400 °C

### Operating temperature

Ambient: -40 ... +60 °C

### Dial

Aluminium, white, black lettering

### Measuring principle

Bourdon tube system

**Contact**

Microswitch

**Capillary length**

Max. 5 m

**Type of contact**

1 fixed change over switch

**Capillary outlet**

Lower back

**Switch rating**

5 A, AC 250 V

**Connection, electrical**

0.8 x 6.3 mm terminal block or AMP plug connection

**Case**

Plastic, black

**Type of mounting**

Panel mounting with clamp

**Ingress protection**

Case IP 53, terminals IP 00

**Capillary**

Plastic covered max. +120 °C

Copper braided max. +350 °C

Stainless steel max. +400 °C

**Options**

- Other nominal sizes NS 80, 100, 96 x 96
- Case steel
- Panel mounting flange
- Protection cap IP 51 or IP 54
- Switch rating 10 A at AC 250 V
- Other designs of connection
- Designs per DIN EN ISO 13485, medical applications on request

**Special versions****Temperature control and limiting devices for heat generating systems**

Designs certified per DIN EN 14597 and pressure equipment directive 97/23/EG/VdTÜV

**Permissible temperature sensors**

Temperature sensor Model	Ø in mm	Material	Sheath		Operating medium						
			Model	Material	Water		Oil		Air		
					p = 16 bar T = 150 °C	p = 32 bar T = 350 °C	p = 16 bar T = 200 °C	p = 32 bar T = 350 °C	unpressured T = 350 °C	unpressured T = 400 °C	
SF 91	6	Brass	-	-	x						
SF 91	6	Brass	SH16	Brass	x						
SF 91	6	Brass	SH16	1.4571	x			x		x	
SF 91	8	Brass	-	-	x			x		x	
SF 91	8	Brass	SH16	Brass	x			x		x	
SF 91	8	Brass	SH16	1.4571	x	x		x	x	x	
SF 91	10	Brass	-	-	x			x		x	
SF 91	6	1.4571	-	-	x	x		x	x	x	x
SF 91	6	1.4571	SH16	1.4571	x	x		x	x	x	x
SF 91	8	1.4571	-	-	x	x		x	x	x	x
SF 91	8	1.4571	SH16	1.4571	x	x		x	x	x	x
SF 91	10	1.4571	-	-	x	x		x	x	x	x

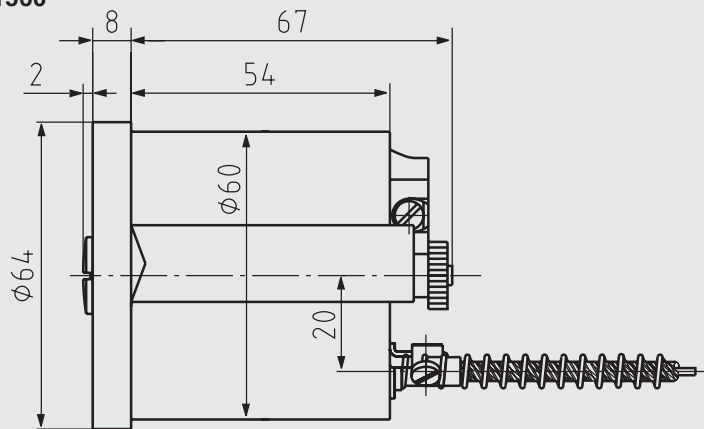
**Certificates and operating instructions**

- DIN CERTO DIN EN 14597, Registration No. STB1161
- TÜV CERT EC-type examination certificate per directive 97/23/EG  
Certificate No.: BAF-MUC 03 03 10002999 001
- Download via [www.wika.de](http://www.wika.de)

# Dimensions in mm

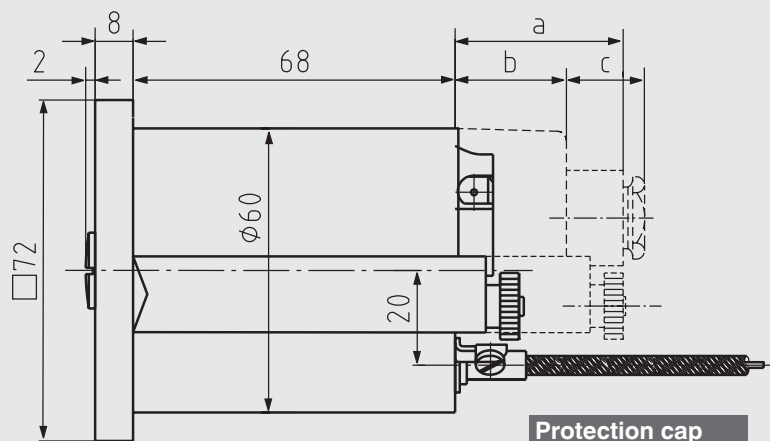
## Standard version

Model SB1560



11455765.01

Model SB1572

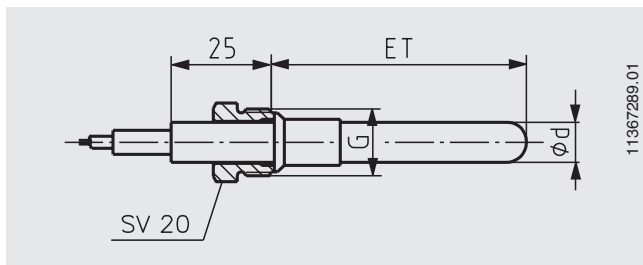


11455773.01

Protection cap	
a	38
b	23.5
c	22.5

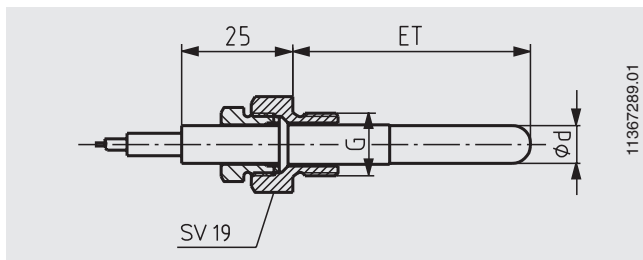
## Designs of connection

### Design of connection SF91 / SV20 with cone sealing



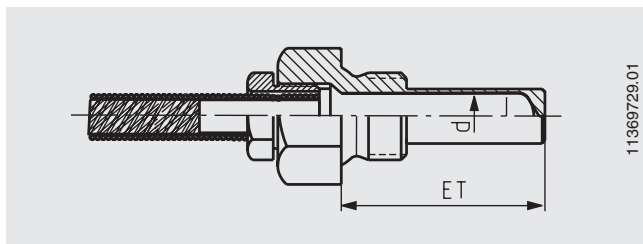
SV20 with M14 x 1.5, M16 x 1.5, M18 x 1.5  
G 1/4 B, G 3/8 B, G 1/2 B  
Cu-alloy, stainless steel 1.4571  
Stem length ET = variable  
Stem diameter d = 6, 8, 10 mm

### Design of connection SF91 / SV19 with fitting



SV19 with M14 x 1.5, M16 x 1.5, M18 x 1.5, M30 x 1.5  
G 1/4 B, G 3/8 B, G 1/2 B, G 3/4 B, G 1 B  
Cu-alloy, stainless steel 1.4571  
Stem length ET = variable  
Stem diameter d = 6, 8, 10 mm

### Design of connection SF91 / SH16 with thermowell



SH16 with G 3/8 B, G 1/2 B, G 3/4 B  
Cu-alloy, stainless steel 1.4571  
Stem length ET = variable  
Stem diameter d = 6, 8, 10 mm

## Ordering information

Model / Nominal size / Scale range / Type of contact / Switching points / Capillary / Capillary length / Design of connection / Options

For further information please refer to [www.wika.de](http://www.wika.de)

The specifications given in this document represent the state of engineering at the time of publishing.  
We reserve the right to make modifications to the specifications and materials.



**WIKAI Alexander Wiegand SE & Co. KG**  
Alexander-Wiegand-Straße 30  
63911 Klingenberg/Germany  
Tel. (+49) 9372/132-0  
Fax (+49) 9372/132-406  
E-mail [info@wika.de](mailto:info@wika.de)  
[www.wika.de](http://www.wika.de)