

# Diaphragm pressure gauge with electrical output signal Stainless steel, safety version Models PGT43.100 and PGT43.160

WIKA data sheet PV 14.03



**intelliGAUGE®**

## Applications

- Acquisition and display of process values
- Transmission of process values to the control room, 4 ... 20 mA, 0 ... 20 mA, 0 ... 10 V
- For measuring points with increased overpressure
- Easy-to-read, analogue on-site display needing no external power
- Safety-related applications

## Special features

- "Plug and play" with no configuration necessary
- Signal transmission per NAMUR
- Measuring ranges from 0 ... 16 mbar
- Easy-to-read analogue display with nominal size 100 or 160
- Safety pressure gauge S3 per EN 837-3



**intelliGAUGE model PGT43,100**

## Description

At any point where the process pressure has to be indicated locally, and, at the same time, a signal is wanted to be transmitted to a central controller or remote control room, the model PGT43 intelliGAUGE (patent applied for, among others European Patent No. EP 06113003) can be used.

Through the combination of a high-quality mechanical measuring system and precise electronic signal processing, the process pressure can be read securely, even if the power supply is lost.

The intelliGAUGE model PGT43 fulfils all safety-related requirements of the relevant standards and regulations for the on-site display of the operating pressure of pressure vessels. An additional measuring point for mechanical pressure indication can thus be saved.

The model PGT43 is based upon a model 43x.30 high-quality, stainless steel safety pressure gauge with a nominal size of 100 or 160. The pressure gauge is manufactured in accordance with EN 837-3.

The rugged design of the diaphragm measuring system produces a pointer rotation proportional to the pressure. An electronic angle encoder, proven in safety-critical automotive applications, determines the position of the pointer shaft - it is a non-contact sensor and therefore completely free from wear and friction. From this, the electrical output signal proportional to the pressure, e.g. 4 ... 20 mA, is produced.

The electronic WIKA transmitter, integrated into the high-quality mechanical pressure gauge, combines the advantages of electrical signal transmission with the advantages of a local mechanical display.

The measuring span (electrical output signal) is set automatically along with the mechanical display, i.e. the scale over the full display range corresponds to 4 ... 20 mA. The electrical zero point can also be set manually.

## Standard version

### Nominal size in mm

100, 160

### Accuracy class

1.6

### Scale ranges

0 ... 16 mbar to 0 ... 250 mbar (flange Ø 160 mm)

0 ... 400 mbar to 0 ... 40 bar (flange Ø 100 mm)

or all other equivalent vacuum or combined pressure and vacuum ranges

### Process connection with lower measuring flange

Stainless steel 316L

Lower mount (LM)

G ½ B (male), 22 mm flats

### Pressure element

≤ 0.25 bar: Stainless steel 316L

> 0.25 bar: NiCrCo-alloy (Duratherm)

### Sealing towards the pressure chamber

FPM / FKM

### Movement

Brass

### Dial

Aluminium, white, black lettering

### Pointer

Adjustable pointer, black aluminium

### Case with upper measuring flange

Stainless steel, with solid baffle wall (Solidfront) and blow-out back, scale ranges ≤ 0 ... 16 bar with compensating valve to vent case, ingress protection IP 54

### Window

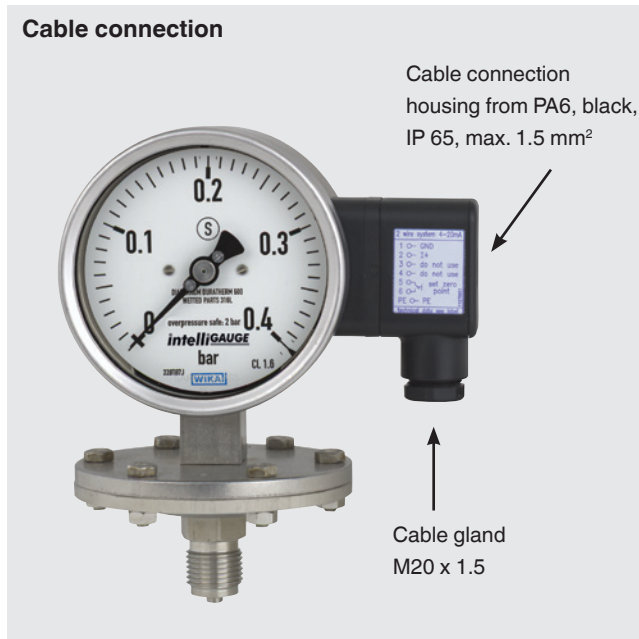
Laminated safety glass

### Bezel ring

Cam ring (bayonet type), stainless steel

## Options

- Other process connection
- Overpressure safety: 10 x full scale value, however max. 40 bar
- Vacuum safe up to -1 bar
- Max. medium temperature +200 °C
- Higher indication accuracy, class 1.0
- Output signal 0 ... 20 mA, 0 ... 10 V
- Open connecting flanges per DIN/ASME from DN 15 to DN 80 (preferred nominal widths DN 25 and 50 or DN 1" and 2"; see data sheet IN 00.10)
- Wetted parts lined/coated with special materials such as PTFE, Hastelloy B2, Hastelloy C4, Monel, nickel, tantalum, titanium, silver (then class 2.5)
- Filling liquid silicone M50
- Version per ATEX Ex II 2G Ex ia IIC T4 / T5 / T6
- Gost standard approval
- Window in polycarbonate (max. ambient temperature 80 °C)
- Switch contacts (see data sheet AC 08.01)



## Specifications

## intelliGAUGE model PGT43.100 / model PGT43.160

### Electrical data

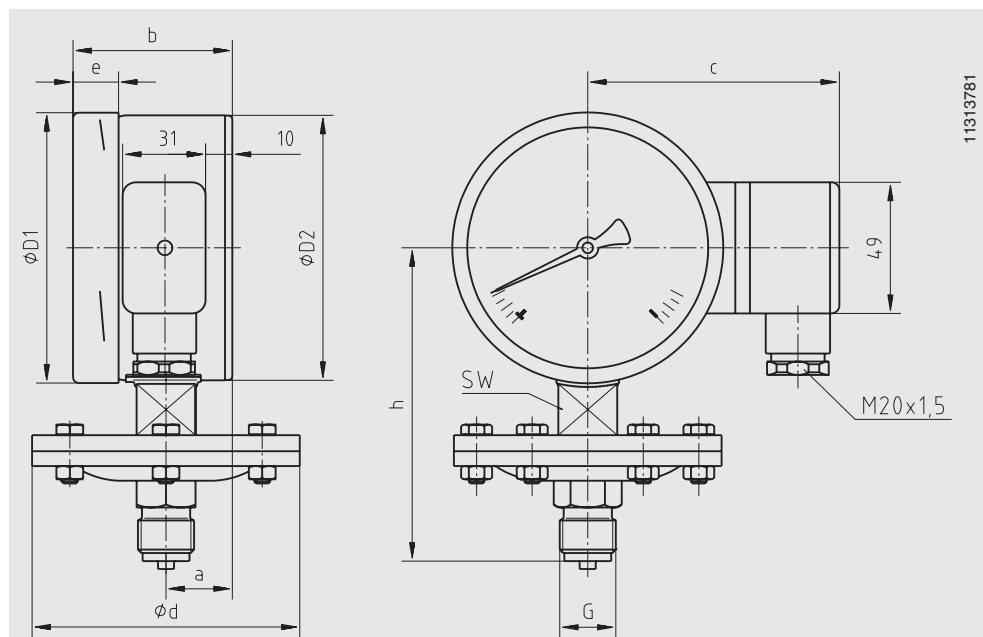
Power supply $U_B$	DC V	$12 < U_B \leq 30$ (min. 14 with Ex version)
Influence of power supply	% FS/10 V	$\leq 0.1$
Permissible residual ripple	% ss	$\leq 10$
Output signal	Variant 1 Variant 2 Variant 3 Variant 4	4 ... 20 mA, 2-wire, passive, per NAMUR NE 43 4 ... 20 mA, per ATEX Ex II 2G Ex ia IIC T4 / T5 / T6 0 ... 20 mA, 3-wire 0 ... 10 V, 3-wire
Permissible max. load $R_A$ for variant 1 - 3		$R_A \leq (U_B - 12 \text{ V})/0.02 \text{ A}$ with $R_A$ in Ohm and $U_B$ in Volt, however max. 600 $\Omega$
Effect of load (variant 1 - 3)	% FS	$\leq 0.1$
Electrical zero point		through a jumper across terminals 5 and 6 (see operating instructions)
■ Long-term stability of electronics	% FS/a	$< 0.3$
■ Electr. output signal		$\leq 1 \%$ of the measuring span
Linearity	% of span	$\leq 1.0 \%$ (terminal method)
Safety-related maximum values		Ex version
■ Power supply $U_i$	DC V	max. 30
■ Short circuit rating $I_i$	mA	max. 100
■ Power $P_i$	W	max. 1
■ Internal capacitance $C_i$	nF	12
■ Internal inductance $L_i$	mH	negligible
Electrical connection		Angular connector, 180 ° rotatable, wire protection, cable gland M20 x 1.5, incl. strain relief, connection cable: Outer diameter 7 - 13 mm, conductor cross-section 0.14 ... 1.5 mm <sup>2</sup> , temperature resistance up to 60 °C
Wiring protection		IP 54 per EN 60529 / IEC 529, filled IP 65
Assignment of terminals, 2-wire (variant 1 and 2) <sup>1)</sup>		<p>1) For 3-wire connection see operating instructions</p>

### Mechanical data

Mechanical design		Safety pressure gauge S3 with solid baffle wall following EN 837-1
Display		Nominal size 100 or 160
Scale ranges		
■ Flange $\varnothing$ 160 mm		0 ... 16 mbar to 0 ... 250 mbar
■ Flange $\varnothing$ 100 mm		0 ... 400 mbar to 0 ... 40 bar
Process connection		G ½ B (male) (others as options)
Damping options		
■ For dynam. pressure load		Restrictor in the pressure channel
■ For vibration		Liquid filling of the case
Operating limits		Overload resistance to EN 837-3
Pressure limitation		
■ Steady		Full scale value
■ Fluctuating		0.9 x full scale value
■ Short time		5 x full scale value, however max. 40 bar
		The recommendations for the use of mechanical pressure measuring systems in accordance with EN 837-2 must be observed
Accuracy		
■ Mechanical display		$\leq 1.6 \%$ of measuring span (class 1.6 per EN 837-3)
Permissible temperature range		
■ Medium	°C	-20... +100
■ Ambient	°C	-20 ... +60 (with window in polycarbonate max. 80 °C)
Temperature effect	%/10 K	max. $\pm 0.8$ of full scale value (when the temperature deviates from 20 °C reference temperature)
Case ingress protection		IP 54 per EN 60529 / IEC 529 (with liquid filling IP 65)

## Dimensions in mm

### Standard version



NS	Scale range	Dimensions in mm										Weight in kg
		in bar	a	b	c	d	D <sub>1</sub>	D <sub>2</sub>	e	G	h ± 1	
100	≤ 0.25	25	59.5	94	160	101	99	17	G ½ B	119	22	2.5
100	> 0.25	25	59.5	94	100	101	99	17	G ½ B	117	22	1.3
160	≤ 0.25	25	65	124	160	161	159	17	G ½ B	149	22	2.9
160	> 0.25	25	65	124	100	161	159	17	G ½ B	149	22	1.7

## CE conformity

### Pressure equipment directive

97/23/EC, PS > 200 bar, module A, pressure accessory

### EMC directive

2004/108/EC, EN 61326 emission (group 1, class B)  
and interference immunity (industrial application)

### ATEX directive

94/4/EC, II 2 G Ex ia IIC

## Ordering information

Model / Scale range / Connection size / Connection location / Output signal / Options

© 2008 WIKA Alexander Wiegand SE & Co. KG, alle Rechte vorbehalten.  
The specifications given in this document represent the state of engineering at the time of publishing.  
We reserve the right to make modifications to the specifications and materials.



**WIKAL Alexander Wiegand SE & Co. KG**  
Alexander-Wiegand-Straße 30  
63911 Klingenberg/Germany  
Tel. (+49) 9372/132-0  
Fax (+49) 9372/132-406  
E-mail info@wika.de  
www.wika.de